

APRIL 2024



FMCI Community Center

1399 Santee Drive, Bldg. 2
San Jose, CA 95122

WE SPEAK

English, Spanish and Vietnamese
Se Habla Español ----- Chúng tôi nói tiếng Việt



Follow us
Facebook.com/fmcisanjose



Need MEDI-CAL Insurance? Please call
(408) 758-4600
¿Necesita Seguro Medico de MEDI-CAL,
(408) 758-4600

SUNDAY

MONDAY

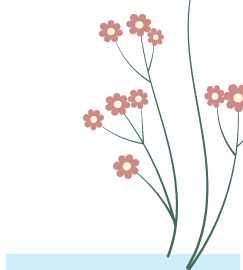
TUESDAY

WEDNESDAY

THURSDAY

FRIDAY

SATURDAY



CENTER CLOSED
1

Senior Group
9:00am - 10:30am
2

A La Carte
3:30pm - 4:30pm
3

SH Food Distribution
3:30pm - 5:30pm
4

Senior Wellness Drop-in
10:00am-11:30am
Spring in Santee community Event
5 5:00pm -8:00pm

6

7

ESL Class
10:00am - 12:00pm
Rosary/Rosario
5:00pm - 6:00pm
8

Senior Group
9:00am - 10:30am
9

ESL Class
10:00am - 12:00pm
A La Carte
3:30pm - 4:30pm
10

City Team Cloth Drive
4:00pm -5:00pm
SH Food Distribution
11 3:30pm - 5:30pm

Senior Wellness Drop-in
10:00am-11:30am
12

Santee Bazar
8:00am-2:00pm
13

14

ESL Class
10:00am - 12:00pm
Rosary/Rosario
5:00pm - 6:00pm
15

Senior Group
9:00am - 10:30am
16

ESL Class
10:00am - 12:00pm
A La Carte
3:30pm - 4:30pm
17

SH Food Distribution
3:30pm - 5:30pm
MAT Association
6:00pm - 8:00pm
18

Senior Wellness Drop-in
10:00am-11:30am
19

Earth Day Community Event
9:00am -12:00pm
20

21

ESL Class
10:00am - 12:00pm
Rosary/Rosario
5:00pm - 6:00pm
22

Senior Group
9:00am - 10:30am
23

ESL Class
10:00am - 12:00pm
A La Carte
3:30pm - 4:30pm
24

SH Food Distribution
3:30pm - 5:30pm
25

Senior Wellness Drop-in
10:00am-11:30am
Evergreen Exploration Event
3:00 pm - 6:30pm
26

Santee Bazar
8:00am-2:00pm
27

28

ESL Class
10:00am - 12:00pm
Rosary/Rosario
5:00pm - 6:00pm
29

Senior Group
9:00am - 10:30am
Day of the Child Event
3:00 pm - 5:00pm
30



Open Monday to Friday 8:00 AM - 4:00 PM
Center Phone Number / Numero de Telefono: (408) 640 - 9654